

Barcelona, 16th November 2010

Workshop

Stroke *with* planning Vs. Stroke *without* planning

Pedro Abreu

Serviço de Neurologia do Hospital de S.João EPE
Assistente Convidado de Neurologia/Neurocirurgia
Faculdade de Medicina da Universidade do Porto

On behalf of Grupo de Estudo DVC do Hospital de S.João EPE



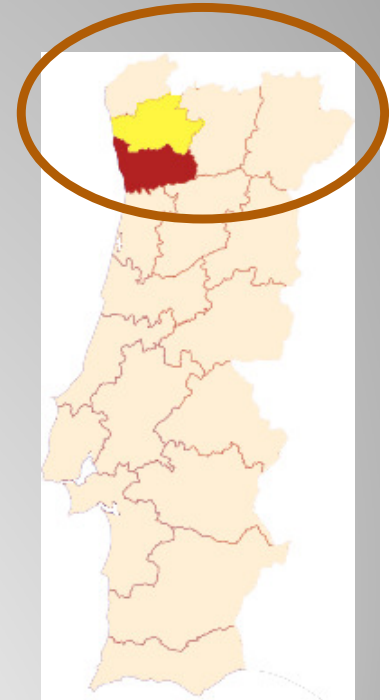
FMUP



SÃO JOÃO
HOSPITAL

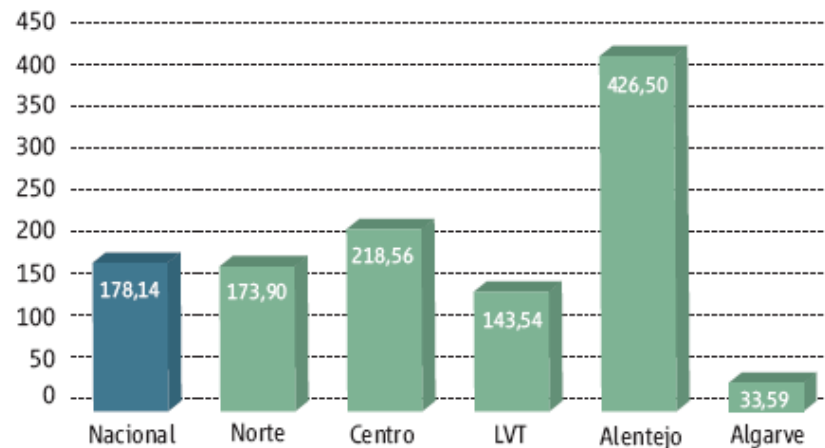
Country details

- 10.637.713 inhabt.
- ~3.745.246 inhabt. North of Portugal
- ~37% of Portugal population
- 21 278 km² (24% Continental Portugal)
- 5 districts:
Viana do castelo, Vila Real
Braga, Bragança
Porto

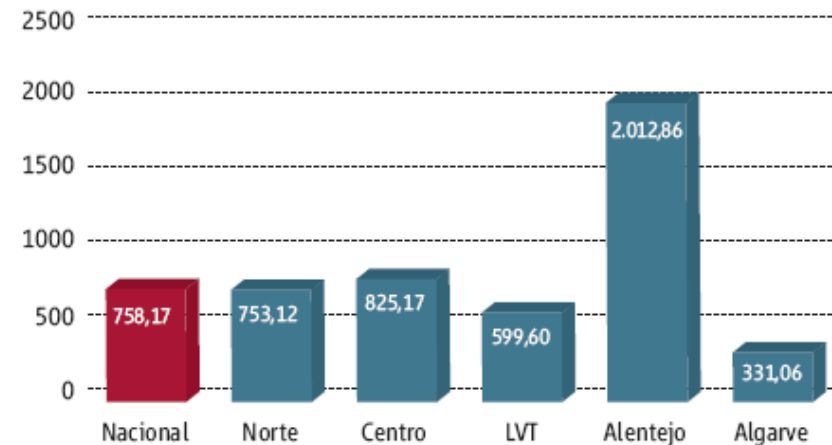


Stroke characterization

TOTAL DE AVC HEMORRÁGICOS POR MILHÃO HABITANTES (2009)



TOTAL DE AVC ISQUÉMICOS POR MILHÃO HABITANTES (2009)



Health System Information

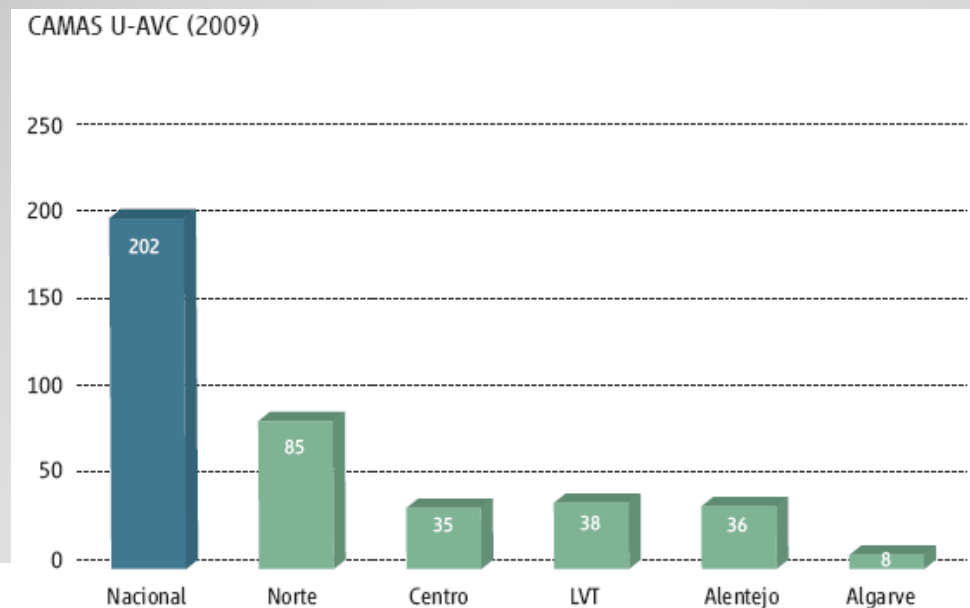
- Public health system
- 3 main regional health administrations (ARS norte, centro e sul)
- Budgeting depending on Central Governement
- 4 terciary hospitals (North of Portugal)



Stroke Units Information

(North Portugal)

- 9 stroke units (1 in every main district hospital)
- Each tertiary hospital has a stroke unit



Stroke Units Information

DOENTES SUBMETIDOS A FIBRINÓLISE	2006	2007	2008	2009
HSJosé	-	56	77	100
HSJoão	62	94	101	96
HUC	5	7	24	65
HSSebastião	-	61	-	58
HSFXavier	-	-	2	50
HSBernardo	-	32	38	49
HGOorta	-	14	43	46
HESilva	-	-	23	39
HSTeotónio	-	-	29	38
HPHispano	-	-	24	37
HSPVReal	-	36	37	35
HGSAntónio	-	-	21	28
HSAndré	-	-	8	27
HIDPedro	-	-	6	26
HGCovões	5	12	20	22
HFFonseca	-	-	-	18
HLAlentejano	-	-	7	16
HFaro	-	-	7	13
HPCovilhã	14	16	23	13
HPortimão	-	-	12	10
HFSanto	-	-	19	10
HPAmérico	-	-	-	10
HMCavaleiros	-	-	-	6
HJJFernandes	-	-	1	4
HSMarcos	-	49	58	-

DOENTES COM AVC SUBMETIDOS TERAPÊUTICA ENDOVASCULAR	2009
HSJosé	40
HFaro	14
HGSAntónio	10
HSJoão	4
HPHispano	2
HSFXavier	1
HGCovões	1
HPAmérico	1
HSPVReal	1

Acute stroke patient circuit

Via Verde Pre-Hospitalar

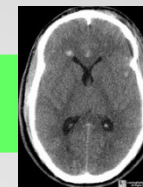
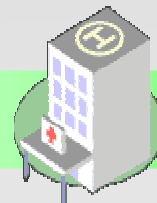
112 call

- Boca ao lado
- Falta de força membro
- Dificuldade em falar

Operational center informs Hospital



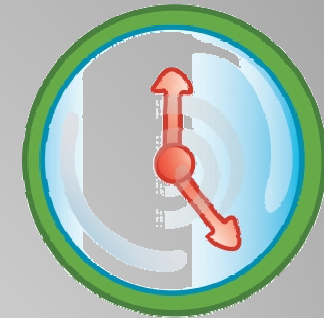
Accuracy TIA/Stroke 79%



Via Verde Intra-hospitalar

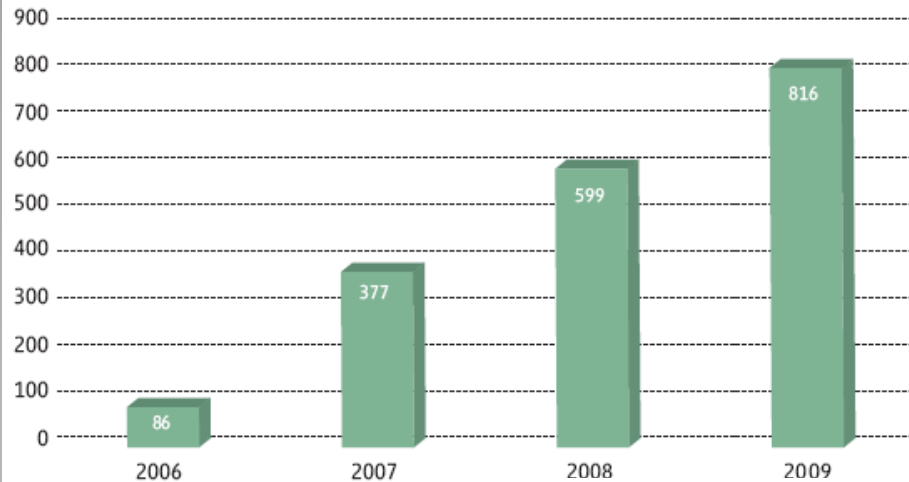
Cincinnati Stroke Scale FAST

First stroke measures

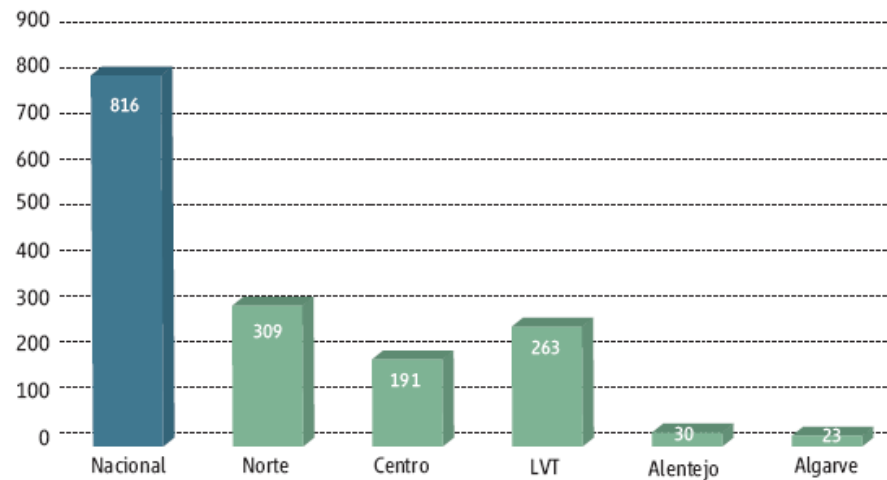


Acute stroke results

DOENTES DAS UNIDADES DE AVC SUBMETIDOS A FIBRINÓLISE –EVOLUÇÃO ANUAL



NÚMERO DE DOENTES DAS UNIDADES DE AVC SUBMETIDOS A FIBRINÓLISE (2009) – DISTRIBUIÇÃO REGIONAL



Our experience...



Hospital details

- Hospital de S. João EPE
- Tertiary hospital
- Oporto, North Portugal
- 1121 beds
- Primary population basis: 300,000-500,000



Stroke Info

2009



- 1469 patients admitted HSJoão, 10.8% mortality
- 1081 ischemic stroke patients , 7.86% mortality
- 271 hemorrhagic stroke patients
- 8 beds in stroke unit
- 608 patients admitted stroke unit (41% all stroke pat.)
- Multidisciplinary stroke unit team



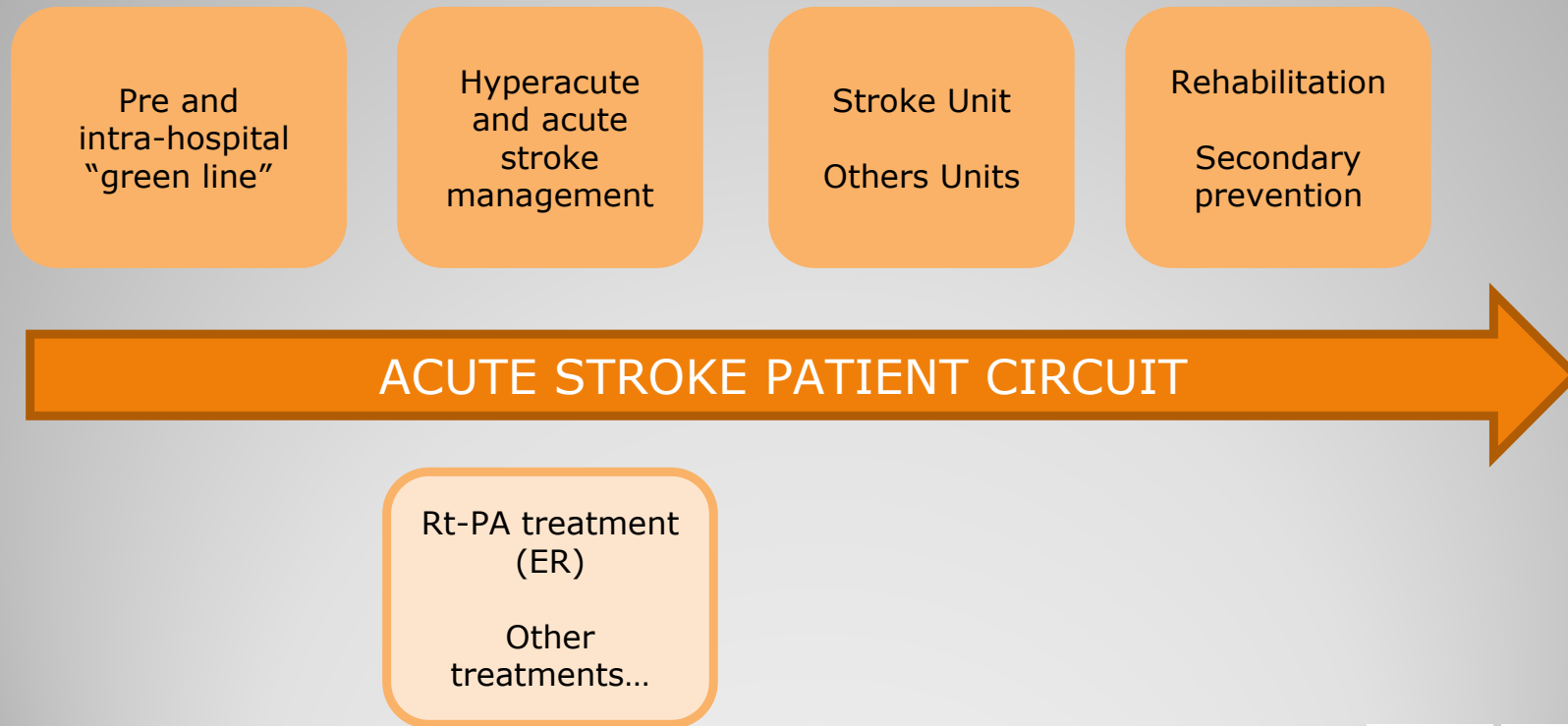
Treatment Info

2009



- Treatment guidelines (stroke unit)
- Iv rt-PA protocols (24h/rt-PA treatment)
- 96 patients treated with rt-PA (9% isch./pat.)
- Neurosurgery (decompressive/haematoma surgery)
- Extra/intracranial angioplasty/stenting
- Carotid surgery
- Not always have endovascular procedures

Acute stroke patient circuit



TIA Care Info

- All patients are hospitalized
- Quick and basic study (ecoDoppler...)
- Differential diagnosis
- Secondary prevention



Rehabilitation Info



- Early multidisciplinary team care
- Post-stroke acute phase rehab. centers
- Domiciliary rehab. treatment
- Rehab. clinics

Strengths



- Early multidisciplinary team care
- Good prehospitalar stroke network
- Good hyperacute stroke treatment

Weakness



- Not always have endovascular procedures
- Not having a centralized stroke infirmary (resource dispersion)
- Precocious rehabilitation (3 months) not controlled
- Not having administration personnel